



michelekantra.com
[Michele's NY Fashion Blog](#)

Fashion inspiration and events from New York City. Trend info and insights from runway analysis, trade shows, retail boutiques, popular culture, and street fashion.



Texworld USA Spring '12 Summary & Fabric Directions

January 20, 2011



Texworld USA, Jan 18-20, along with partners Lenzing and Supima, welcomed exhibitors from 13 countries, with an added focus on vendors of findings, trims and embroidery. Trend forum displays created by Stylesight were a new collaboration. Venue in the North Hall at the Javits Center in NYC created a cozier environment with the balcony entrance overlooking the show floor.

Favorite seminar speaker David Wolfe, Creative Director of Doneger Group, presented his always-on-target forecast for Spring/Summer 2012. Stylesight's fabric directions seminar by Sophie-Lucie Dewulf and Andrea Praet tied the seasonal trends in with the categories on the show floor.



Photo credits: all @Michele Kantra

Texworld USA Spring '12 Fabric Directions

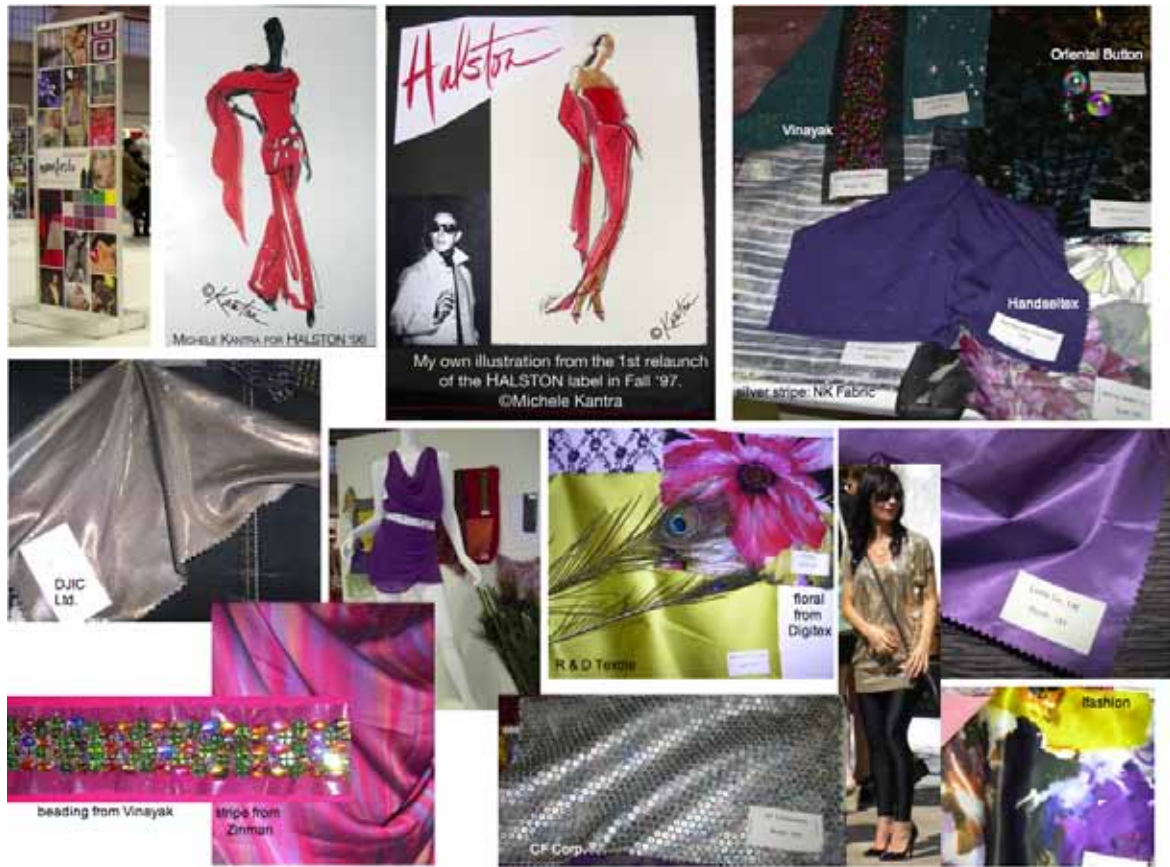
January 20, 2011

p2

4 Fabric Trend Moods - S/S '12

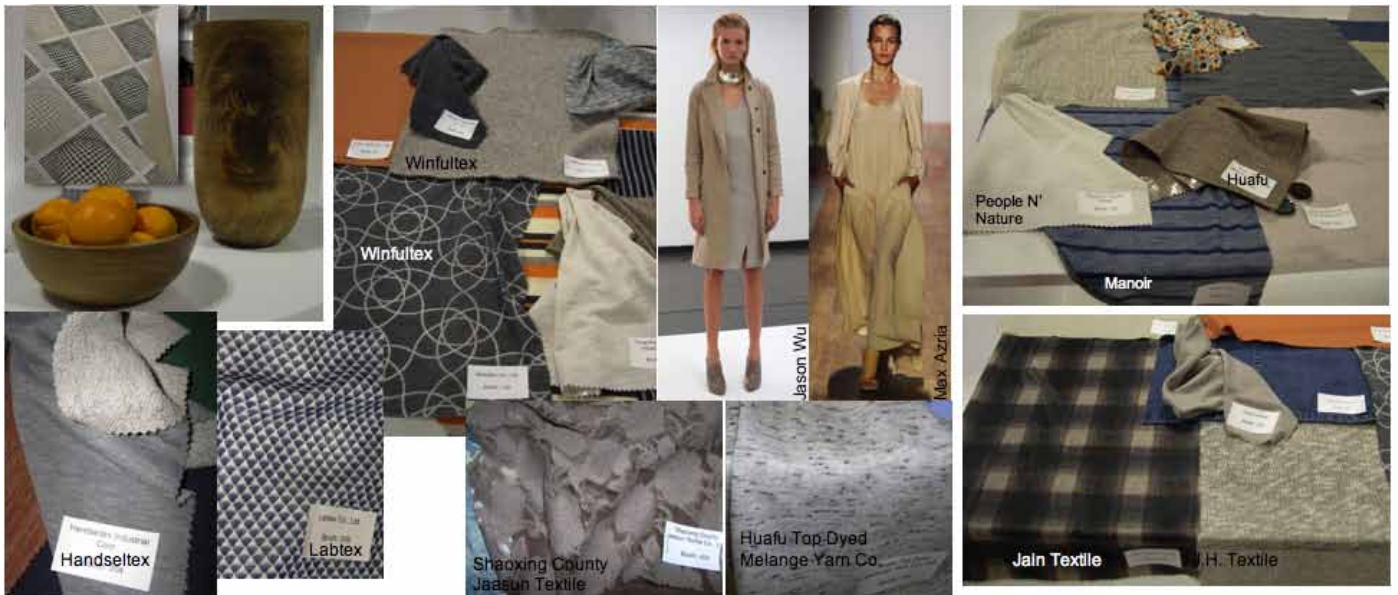
- 70s Glossy Glam
- Nostalgic Naturals
- Soul Culture
- Edgy Rocker

70s Glossy Glam - Inspired by the 70s decadent fun, Studio 54, Halston, YSL, high gloss fabrics, bright color, esp. fuschia, purple, red. Influence: Marc Jacobs S11



Photos: Michele Kantra

Nostalgic Naturals - Low tech aesthetic, think restraint, simplicity, **analogue**, slow life, authentic, heritage, old-time general store, minimalism, geek chic. Materials influenced by raw wood, leather, artisan crafts, raffia, linen, paper, origami. Fabric highlights: hi-tech sustainables, natural looks in new fibers. Mood: high end, eco-friendly, comfort, back to nature. Colors: greige, smokey taupe, indigo, accents of green, blue, orange.



Swatch photos: Michele Kantra

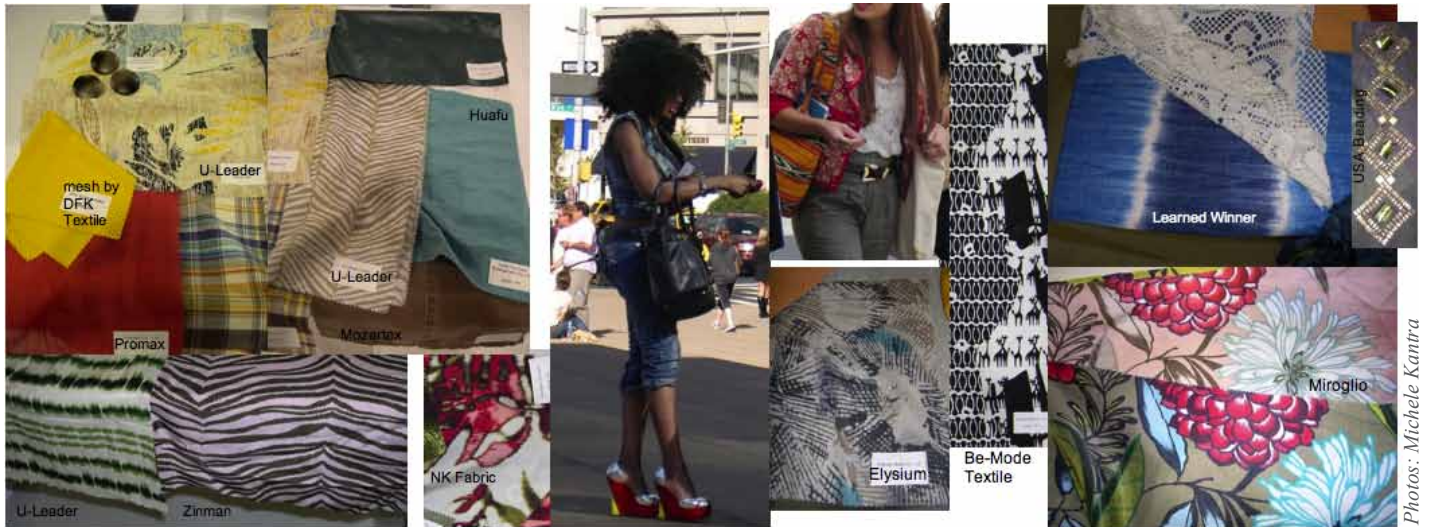
Texworld USA Spring '12 Fabric Directions

January 20, 2011

p3

Fabric Trend Moods - S/S '12

Soul Culture - A celebration of multiple facets of African-American culture, music, art. Think old school Soul Train, to the New Dandy black renaissance of Janelle Monae. Trend includes island, Caribbean and West Africa influences. **Colors:** red, yellow, sea blue, lime plus neutral khakis and O.D. **Fabric directions:** African beading, mixed traditional prints, modern craft textures, broderie anglais, dip-dye and faded washes.



Photos: Michele Kantra

Edgy Rocker - Hard-edged, Punk, **Rebel**. Dark neutral colors, black, metal trims, red accents. A 2nd softer interpretation, Asian-inspired faded tattoos, feminine, boudoir. Prints: lace, leopard, muted washy abstracts.



Photos of swatches & models: Michele Kantra